



GLOBAL WATER GROUP

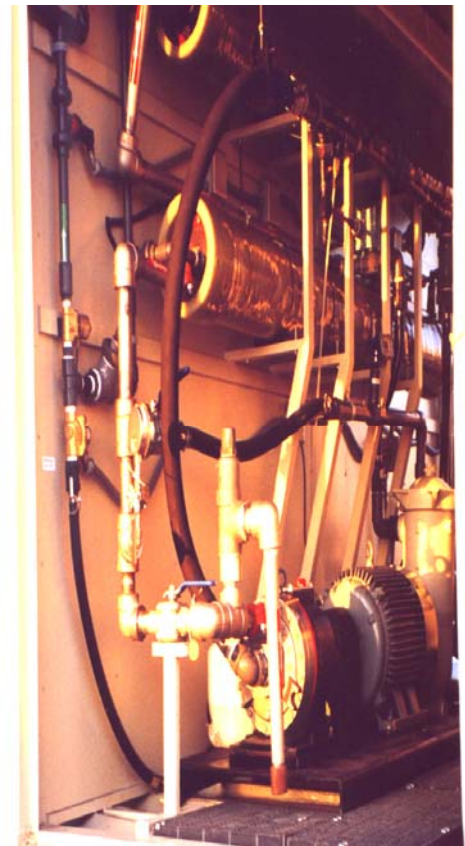
DALLAS, TEXAS U.S.A.

MANUFACTURER OF THE WORLD'S BEST
WATER PURIFICATION AND WASTE WATER EQUIPMENT

Desalination

From Brackish to Seawater

Salt Removal with RO, Potability with LS3 Processing



GLOBAL'S DESAL SERIES

- **Mobile** to make it easily transportable by land, air or sea... or...
- **Fixed Base** on platforms for encampments, permanent facilities, municipal use or industry.
- **Self-contained** power source or compatible to local power 110V-480V 60 Hz or 220V – 380V 50 Hz.
- **Submersible or suction feed pumps** to meet the needs.
- **Modules** for optimum efficiency to network up at any municipal size.
- **Modularization** provides for faster manufacturing and installation, easier access, easier and less costly maintenance.
- **Meets or exceeds US-EPA, U.S. ANSI, EU and W.H.O. potable water standards.**
- **GLOBAL'S SYSTEM DESIGN AND INTEGRATION OF COMPONENTS**

1. **Global's LS3 Fresh Water Component for its Water Purification Process**

- a. Through filtration it captures **parasites**, like *Giardia*, *Cryptosporidium* or *amoebae*.
- b. Through its proprietary multi-media filtration pod it captures **hazardous metals**: like lead or mercury; **toxic chemicals**, **insecticides**, **pesticides**, **radon**, **chlorine**, **bad taste** and **odor**.
- c. Utilizing ultra-violet, it kills all **bacteria** and **viruses**.

2. **Global's RO Component for its Salt Water Purification Process**

Removes salt up to 45,000 ppm (50,000 ppm for military systems). Options to 60,000 ppm.

Global Water's MILITARY DESAL SERIES uniquely have four modes of operation.

Mode 1 – RO & LS3: Sea water is processed first through the RO component (to remove the salt – TDS) and then through the LS3 component to provide the highest quality drinking water from the worst of possible sources.

Mode 2 – LS3 only: For fresh water, we process only through the LS3 component. This process provides high quality drinking water through a simple to operate, low maintenance, field tested system, requiring no backwashing, no chemicals and no waste.

Mode 3 – RO only: Any water, fresh or seawater, is processed solely through the RO. This process provides acceptable drinking water.

Mode 4 – both RO & LS3 simultaneously: Fresh water is processed directly **by both** the **LS3 and the RO** components of the system simultaneously. This process provides double the capacity output of potable water.



Desalination Platforms

<u>MODEL #</u>	<u>M3/DAY</u>	<u>M3/HR</u>	<u>L/MIN</u>	<u>GPD</u>	<u>GPH</u>	<u>GPM</u>
LS3-.06K-DESAL	2,268	95	1.58	600	25	0.4
LS3-1.0K-DESAL	3,780	158	2.63	1,000	42	0.7
LS3-1.5K-DESAL	5,670	236	3.94	1,500	63	1.0
LS3-2.5K-DESAL	9,450	394	6.56	2,500	104	1.7
LS3-3.0K-DESAL	11,340	473	7.88	3,000	125	2.1
LS3-6.0K-DESAL	22,680	945	15.75	6,000	250	4.2
LS3-7.2K-DESAL	27,216	1,134	18.90	7,200	300	5.0
LS3-14.4K-DESAL	54,432	2,268	37.80	14,400	600	10.0
LS3-21.6K-DESAL	81,648	3,402	56.70	21,600	900	15.0
LS3-28.8K-DESAL	108,864	4,536	75.60	28,800	1,200	20.0
LS3-50.4K-DESAL	190,512	7,938	132.30	50,400	2,100	35.0
LS3- 72K-DESAL	272,160	11,340	189.00	72,000	3,000	50.0
LS3-100K-DESAL	378,000	15,750	262.50	100,000	4,167	69.4
LS3-125K-DESAL	472,500	19,688	328.13	125,000	5,208	86.8
LS3-144K-DESAL	544,320	22,680	378.00	144,000	6,000	100.0
LS3-150K-DESAL	567,000	23,625	393.75	150,000	6,250	104.2
LS3-175K-DESAL	661,500	27,563	459.38	175,000	7,292	121.5
LS3-200K-DESAL	756,000	31,500	525.00	200,000	8,333	138.9
LS3-225K-DESAL	850,500	35,438	590.63	225,000	9,375	156.3
LS3-250K-DESAL	945,000	39,375	656.25	250,000	10,417	173.6
LS3-264K-DESAL	1,000,000	41,667	694.44	264,550	11,023	183.7

Basic Systems:

- Platform Based
- Up to 45,000 ppm
- SS high pressure
- Premium membranes
- Ultra Violet process
- Manuals & Video
- 1 - Yr Warranty

Options:

- Auto Cleaning System
- Up to 60,000 ppm
- Housings
- Mobility
- On-Site Training
- On-Site Assembly
- 3 - Year Warranty

Brackish Water Platforms

<u>MODEL #</u>	<u>M3/DAY</u>	<u>M3/HR</u>	<u>L/MIN</u>	<u>GPD</u>	<u>GPH</u>	<u>GPM</u>
LS3-.06K-BRA	2,268	95	1.6	600	25	0.4
LS3-1.0K-BRA	3,780	158	2.6	1,000	42	0.7
LS3-1.5K-BRA	5,670	236	3.9	1,500	63	1.0
LS3-2.5K-BRA	9,450	394	6.6	2,500	104	1.7
LS3-3.0K-BRA	11,340	473	7.9	3,000	125	2.1
LS3-6.0K-BRA	22,680	945	15.8	6,000	250	4.2
LS3-7.2K-BRA	27,216	1,134	18.9	7,200	300	5.0
LS3-14K-BRA	54,432	2,268	37.8	14,400	600	10.0
LS3-21K-BRA	81,648	3,402	56.7	21,600	900	15.0
LS3-28K-BRA	108,864	4,536	75.6	28,800	1,200	20.0
LS3-50K-BRA	190,512	7,938	132.3	50,400	2,100	35.0
LS3-72K-BRA	272,160	11,340	189.0	72,000	3,000	50.0
LS3-100K-BRA	378,000	15,750	262.5	100,000	4,167	69.4
LS3-125K-BRA	472,500	19,688	328.1	125,000	5,208	86.8
LS3-144K-BRA	544,320	22,680	378.0	144,000	6,000	100.0
LS3-150K-BRA	567,000	23,625	393.8	150,000	6,250	104.2
LS3-175K-BRA	661,500	27,563	459.4	175,000	7,292	121.5
LS3-200K-BRA	756,000	31,500	525.0	200,000	8,333	138.9
LS3-225K-BRA	850,500	35,438	590.6	225,000	9,375	156.3
LS3-250K-BRA	945,000	39,375	656.3	250,000	10,417	173.6
LS3-264K-BRA	1,000,000	41,667	694.4	264,550	11,023	183.7

Basic Systems:

Platform Based
 Up to 10,000 ppm
 Premium membranes
 Manuals & Video
 1 - Yr Warranty

Options:

Auto Cleaning System
 Mobility
 Housings
 On-Site Training
 3 - Year Warranty

The Building Begins

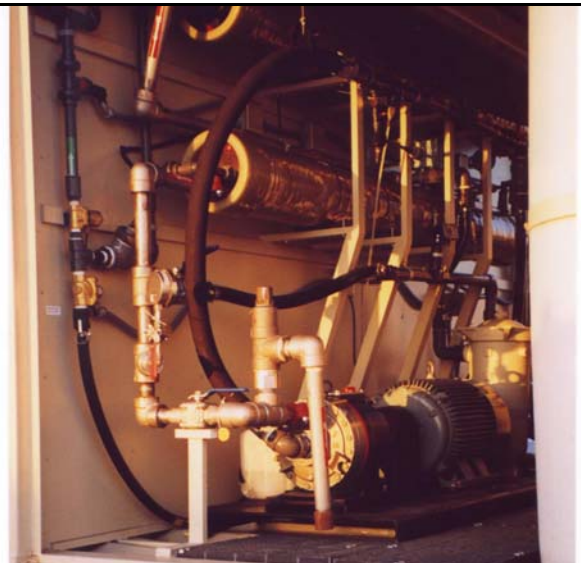


The building of a LS3-
Mobile Desal begins

It's on the road and
ready to go to work



A real look inside





**Mobile, Military
LS3-DESAL-M75GPH**